



EYE CAPITAL ® braiNY001 ETN

ISIN: XS1758500661 - *The Artificial Intelligence Fund*

Summary Prospectus - January 2018

Before you invest in our ETN, it is advisable to carefully review the Fund's prospectus as well as the statements of additional information. In case you have any questions regarding the Fund's information, we strongly recommend contacting our sales and technical representatives. The Fund's prospectus refers to all the selection mechanisms of the instruments that compose the investment portfolio of the ETN. It also contemplates the investment risk related to this instrument and the mechanisms of risk control.

Artificial Intelligence for the selection of stocks and portfolio optimization. The strategy applies Deep Learning, Bayesian Statistics and Natural Language Processing for the interpretation of financial news in an automatic way and in real time.

Fees of the ETN

- Administrative fees: 2.00% annual NAV (Net Asset Value)
- *Arranger fee* (fee de estructuración): 0.35% annual
- Initial fee: 2.00% of the total investment.

The Fund pays transactions costs, such as commissions, when it buys or sells stocks. It also has minor annual administrative expenses.

braiNY 001 Principal Investment Strategy

Our algorithm monitors more than 7500 instruments that are listed in the New York markets, specifically in NYSE and NASDAQ.

Taking into consideration hundreds of technical and fundamental indicators as well as the automatic interpretation of news in real time, a complex algorithm applying Artificial Intelligence tools decides which stocks should be bought or sold composing a portfolio where investors decide to invest (EYE CAPITAL - braiNY 001 ETN).

The algorithm constantly monitors the parameters mentioned, makes predictions and takes decisions of buying and selling automatically rebalancing the portfolio periodically.

The strategy only invests in stocks and ETFs, NOT in other instruments such as fixed-income bonds and saves a minimum CASH percentage of about 2.00%.

Main Risks of Investing in the Fund

Being a portfolio exclusively composed by stocks without fixed-income components, these investment portfolios are considered of High Risk. Nevertheless, the algorithm has strict risk control mechanisms based on STOP-LOSS, TAKE-PROFIT and complex mathematical prediction calculations and sentiment measurement indicators in real time providing them with the ability of reacting very quickly.

In order to diversify the risk, the portfolio is balanced considering different segments such as Health, Industry, Energy, Technology, Telecommunications or Biotechnology.

Stock prices can rise or fall constantly. Sometimes they do it smoothly and in a phased manner. In other cases, they do it in an abrupt and unpredictable fashion. Considering the first case, the mechanisms of risk control are activated immediately in an efficient and automatic way. In the second case, price variation can generate a great loss if stock prices fall in a very rapid, deep and volatile way. These events are called "flash crash".

On the other hand, it is necessary to take into account the "Markets Risks" where several external factors such as global political, social and economic events can alter the stock prices in a volatile way.

Portfolio Managers

BMIM is a corporation organized in the State of Florida and registered to conduct business as a Registered Investment Adviser. BMIM provides asset management, research, and other financial advice to individuals, institutions and corporations. BMIM's investment advisory services are provided through various types of discretionary and non-discretionary accounts in accordance with each client's investment objectives and pursuant to the terms outlined in its investment advisory agreement. The Adviser's discretionary and non-discretionary investment management services include the design, structure, and implementation of investment strategies for managed Accounts. Investment activities focus on investments in various kinds of assets and securities in a variety of markets that is intended to fit within the client's objectives, strategies and risk profile as described by each client.

Portfolio Manager	BULL MARKET INVESTMENT MANAGEMENT, INC.
Portfolio Manager Address	6971 N Federal Hwy suite 403
Portfolio Manager Address	Boca Raton, FL 33487
Contact Person	Lautaro David Marra
Telephone Number:	561-757-2323

Information about EYE CAPITAL braiNY 001

Series Name: EYE CAPITAL BRAINY 001
ISIN: XS1758500661 (This is how it will be listed in Bloomberg)
Maturity Year: 2028
Issue Date: 24th January 2018
Issuer: AlphaNotes Securities DAC
Issue Agent: Bank of New York Mellon, UK
Payin Agent: Bank of New York Mellon, UK
Auditor: PriceWaterhouse Coopers
Placing Agent & Sale Agent: PanAmerica Capital Group, Inc.
Listing: Vienna Stock Exchange
Calculation Agent: AlphaNotes

Investment Horizon: 1 year

Given the nature of this Fund, the minimum recommended investment horizon is of one year. Anyway, the investor may leave the Fund once a month, 72 hours prior to the completion of the investment according to the USA calendar.

The investor may enter the Fund between days 1 and 20 of each month.

Moreover, there will be a secondary market where investors may enter and exit the fund prior an arrangement between the parts regarding the price.

Main requirements in order to trade in EYE CAPITAL braiNY 001:

- To have an account in a brokerage firm which trades with Euroclear
- To check that the fees with Euroclear are accessible. In some cases, these fees are really high and it is strongly recommended that you check this fact before making any transaction.

How to buy or sell EYE CAPITAL braiNY 001:

- Our sales representatives will provide you with a detailed document with all the necessary steps that the broker must follow in order to buy or sell braiNY 001. Officially, the Fund's price will be updated once a month, but you can monitor the daily return position and the Fund's composition in the website.

Returns

EYE CAPITAL braiNY 001 has been tested with real money for a period of 9 months and has obtained returns around 20%.

The main Investment objective is to obtain returns higher than our benchmark Standard & Poor's 500.

Date	Performance braiNY	Performance SPY
May 8th to June 7th	4.26%	1.67%
June 8th to July 7th	0.41%	-0.25%
July 8th to August 7th	4.21%	2.28%
August 8th to September 7th	0.07%	-0.36%
September 8th to October 7th	4.01%	3.24%
October 8th to November 7th	0.62%	1.25%
November 8th to December 7th	0.33%	2.47%
December 8th to January 7th	4.46%	3.16%
January 8th to February 7th	-1.84%	-5.95%
Cummulative Returns	16.53%	7.51%

Table 1. Performance and Cummulative Results braiNY vs. SPY

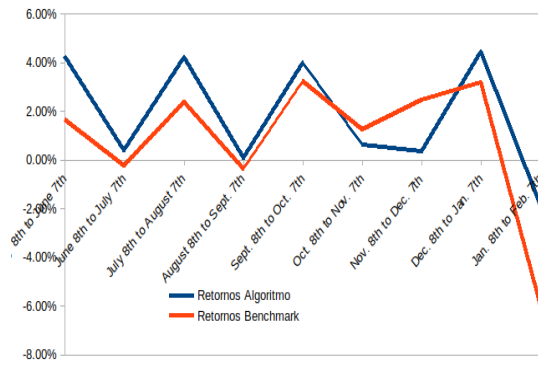


Chart 1. Montly Returns.

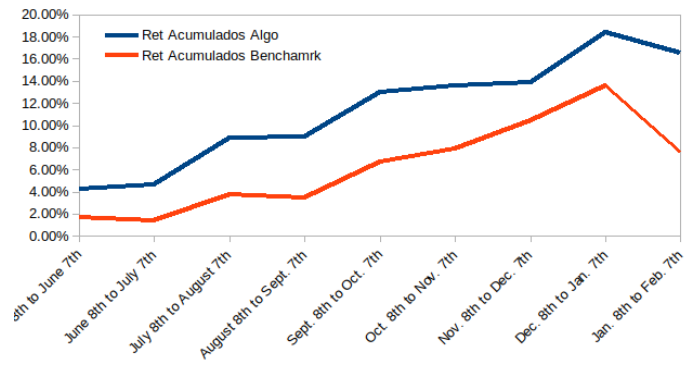


Chart 2. Cummulative Returns.

Purchase and Sales Information

You can buy or sell our ETN directly with Eye Capital S.A. or through our official sales representatives.

Eye Capital S.A. will not be responsible for any conflict of interests regarding the investment recommendation in EYE CAPITAL brainNY 001.

For questions related to our official sales representative, you may contact: info@eye-capital.com

Contact

For any additional information you can visit our website: <http://eye-capital.com> or by e-mail: info@eye-capital.com

You may also contact the Portfolio Manager in this document.